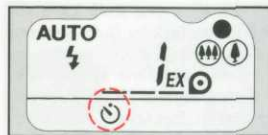


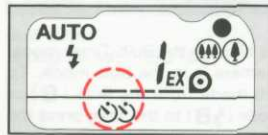
## SELF-TIMER PHOTOGRAPHY



### Self-Timer

Use the self-timer if you wish to take a picture of yourself. Use of a tripod is recommended. Press

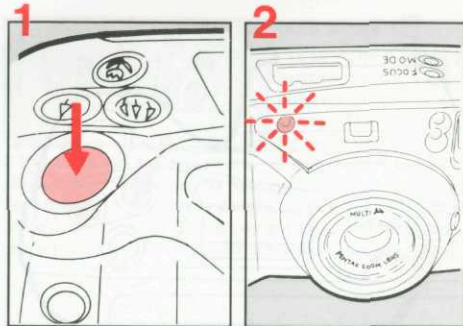
the drive button until the (🕒) appears on the LCD panel.



### Dual-Frame Self-Timer

In this mode, you can take two consecutive self-timer pictures.

Press the drive button until the (🕒🕒) symbol appears on the LCD panel. Press the shutter release button. The first frame will be exposed after approx. 10 seconds, then the second frame approx. 5 seconds after the first. Note that focus for both shots is locked at the first frame.

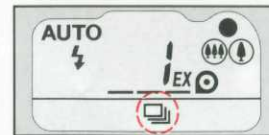


- 1 Focus on the subjects first by pressing the shutter release button halfway, and then depress the shutter release button all the way down. The shutter will be released in about 10 seconds.
- 2 When the Self-Timer is working, the Self-Timer symbol (🕒) blinks on the LCD panel, and the Self-Timer lamp lights up. The lamp starts blinking 3 seconds before the shutter is released, letting you know when to smile.

## CONSECUTIVE PHOTOGRAPHY

### Notes on Self-Timer and Dual-Frame Self-Timer:

- \* To cancel the self-timer after it has been started, press the main switch. In this instance, the power is not switched off.
- \* When combined with (B), (🕒B) or (👁🕒B), the shutter will be released in approx. 1/2 sec.
- \* When using flash, make sure the flash is charged (the red lamp lights up) before operating either timer feature.
- \* When the battery symbol (🔋) appears on the LCD panel, the camera may not operate. If this occurs, replace the batteries (see page 41).



Press the drive button until the (📷📷) symbol appears on the LCD panel. While the shutter release button is held down, a frame is shot every 1.6 sec. Moving subjects such as a running person, etc., can be shot. The camera focuses on the subjects frame by frame in this mode, so make sure to keep the autofocus frame on the subject.

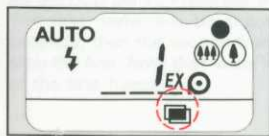
### Note:

- When using flash in this mode, consecutive shooting is possible only after the flash is charged (the red lamp lights up) following each exposure.


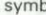
## MULTI-EXPOSURE SHOOTING



Multi-Exposure mode will disengage the film advance, letting you superimpose images on a single frame for fantastic illusions. Your imagination can produce striking creative effects.



### Procedure

1. Press the drive button until the symbol (  ) appears on the LCD panel.
2. Press the shutter release button to shoot an initial exposure. The film will not advance, the frame advance symbol (  ) blinks on the LCD panel to indicate that you are in the Multi-exposure mode. The normal Single-Frame Exposure mode will be restored after the picture is taken.
3. Recompose the frame, and press the shutter release button to shoot the second exposure. (After the second shot, the film will be advanced.)

### To expose more than twice:

Activate the Multi-Exposure symbol before pressing the shutter release button for the second exposure. After the last exposure, the film will wind to the next frame.

### Notes:

- The date will be exposed in step 3 above.
- Repeated multiple exposures tend to overexpose a frame, so it is recommended that you expose a frame just twice or 3 times at most.
- When using Multi-Exposure, you can usually get the best results with dimly-lit backgrounds, such as night scenes.

## INTERVAL SHOOTING



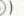
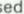
Press the drive button until the ( **INT** ) mark appears on the LCD panel. This mode allows you to shoot with an interval selectable

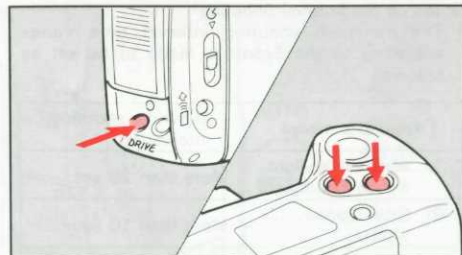
between 10 seconds and 1 hour. It is ideal for observational photography of animals, insects or plants, etc.

[Example: 10S = 10sec. 60M = 60min.]

The selectable shooting intervals are 10, 20, 30, 40, 50, and 60 seconds and 2, 3, 4, 5, 10, 20, 30, 40, 50, 60 minutes.

To select the shooting interval, press either zooming button while pressing the drive button until the required interval time appears on the LCD panel. The preset interval time is 60 seconds. (When the zooming button is kept depressed, the interval time will be fast forwarded.)

- (  ) Pressed to advance to the 60 minutes setting.
- (  ) Pressed to decrease to the 10 seconds setting.



After the selection, press the shutter release button; the first frame will be exposed 3 seconds later. Then the rest of the film will be automatically exposed according to the interval time selected.

### Notes:

- When in the Interval Shooting mode, the interval shooting mark ( **INT** ) blinks on the LCD panel and the remaining time of the interval is also displayed.
- To cancel the Interval Shooting mode after it has been activated, press the main switch. In this instance, the power is not switched off.
- The exposure counter indication appears on the LCD panel when the shutter release button is pressed halfway.

### Notes on the Interval Shooting

- The minimum shooting interval time varies according to the Exposure mode to be set as follows.

Exposure mode	Minimum shooting interval
(1) Auto or Daylight-Synch Shooting	More than 20 sec.
(2) Slow Speed Shutter	More than 10 sec.
(3) Bulb shooting	Exposure time plus 8 sec. or more
(4) Bulb-synch shooting	Exposure time plus 15 sec. or more

- Use a tripod when shooting in the Interval Shooting mode. The focus will be locked at the first frame, and the self-timer lamp starts blinking 3 seconds before the shutter is released.
- To switch to other modes from the Interval Shooting mode, press the drive button in quick succession.



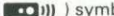
## USING THE WIRELESS REMOTE CONTROLLER

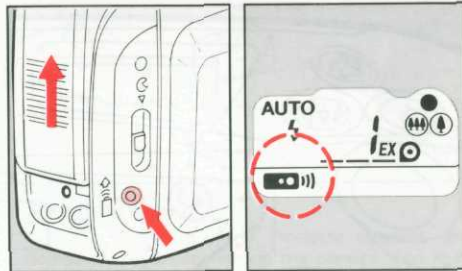
This camera is equipped with a Wireless Remote Controller, allowing you to adjust the focal length in steps of 38, 60, 90mm at a distance and release the shutter.

- Use a tripod when shooting with the Remote Controller.
- When the Remote Controller is used for taking picture, only the Single-Frame Shooting or the Self-Timer mode can be set on the camera. Either mode can be combined with any of the exposure modes.
- Attach the Remote Controller to the camera when not in use.
- Use the Remote Controller to take pictures in the Bulb mode to avoid camera shake.

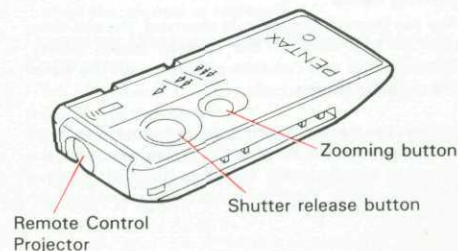
### Removing the Remote Controller

Slide out the Remote Controller in the direction of the arrow while pressing the Remote-Controller-release button.

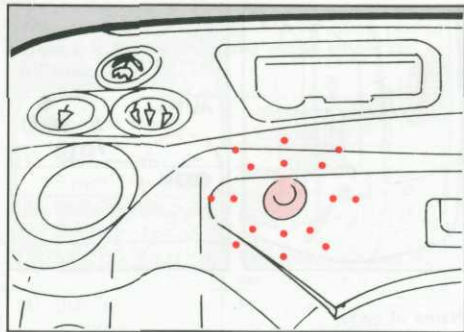
After it is removed, the (  ) symbol appears on the LCD panel to indicate that it can now be used.



Name of parts







### Blinking Lamp

After the Remote Controller is removed, the self-timer lamp on the front of the camera blinks slowly, indicating that you can take pictures with the aid of a Remote Controller.

- \* When the camera is left unused for more than 10 minutes with the Remote Controller removed, the camera automatically switches itself off to save battery power. Push the main switch again to turn it on.

### Selection of Shooting Mode

Set the Single-Frame Shooting or the Self-Timer mode by pressing the drive button.

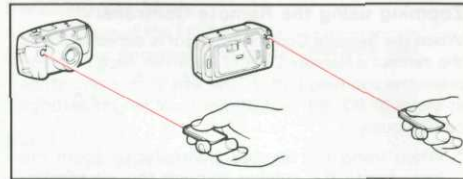
Single-Frame Shooting mode: you can take a picture without any delay by pressing the shutter release button located on the Remote Controller.

Self-Timer Shooting mode: the shutter will be released in 3 seconds if the shutter is released with the Remote Controller; if the shutter is released by the camera's release button, pictures will be taken in the ordinary Self-Timer Shooting mode.

### Compose the picture

Compose the picture and frame the subject with the AF frame. When the shutter release button is pressed halfway down, the green lamp lights up and the focus is locked. Even if you lift your finger off the shutter release button, the focus will remain locked for 10 minutes and the green lamp will blink slowly.

- \* If you wish to focus on another subject after the focus is locked, use the focus-lock technique again to focus on the subject.
- \* Focus lock is unlocked when the Remote Controller is attached to the camera.
- \* When the focus is not locked, the subject framed in the AF frame will be in focus when the Remote Controller's shutter release button is pressed.
- \* In the macro mode, the focus lock function cannot be used for subjects more than 80cm away. Cancel macro mode to take pictures.



### Taking Pictures

Aim the Remote Control Projector towards the Remote Control Receiver on the camera, and then press the Remote Controller's shutter release button to release the shutter.

- \* If the Self-Timer mode is set on the camera, the Self-Timer lamp blinks for 3 seconds quickly and then the shutter is released.

### Operating Distance of the Wireless Remote Controller

From the camera's front: within approx. 5m right from the front of the camera

From the camera's rear: within approx. 0.7m right from the center of the back

- Remote Controller may not function when the subject is backlit. In this case, use the Self-Timer mode to take pictures.

### Zooming using the Remote Controller

When the Remote Control Projector is aimed towards the camera's Remote Control Receiver, each time you press the zooming button, the lens zooms and stops at steps of 90, 60, and 38mm focal length settings *continuously*.

- \* When using the Remote Controller to zoom the lens, frame the subject through the viewfinder, assuming the setting of the zoom lens is 90mm telephoto setting. Otherwise, the subject will be out of the picture area.
- \* You may zoom the lens in and out to change the picture area with the Remote Controller while the focus is being locked.
- \* The lens cannot zoom in and out in the macro mode using the Remote Controller.

### Attaching the Remote Controller

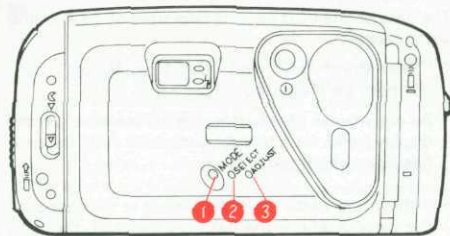
Attach the Remote Controller to the camera after use. Slide the Remote Controller until it locks in place with a click.

### Battery life on the Remote Controller

About 30,000 commands can be issued using the Remote Controller with a battery installed in the Remote Controller. Have exhausted battery replaced at the Pentax Service center located nearest you if the battery is exhausted (service is chargeable).

- \* Never disassemble the Remote Controller. Otherwise, you may damage the weather-resistant parts.

## DATE MODEL



If you purchased the DATE model, read this section. The DATE model records dates up to the year 2019 on pictures.

- 1 MODE button
- 2 SELECT button
- 3 ADJUST button

### Switching the Mode

At each press of the MODE button 1 with your fingernail, the mode in the LCD panel switches as shown in the chart.

#### Notes:

"-----" indicates no data will be imprinted.

- "M" on the LCD panel indicates "Month".
- Use the strap tool's pin-shaped protrusion to press the SELECT and ADJUST buttons.



- \* The date in the picture above is simulated.

### Correcting the date

1. Press the SELECT button **2** to make a different category of digits in the LCD panel you want to change to blink.
  2. Press the ADJUST button **3** to change digits of the specified category you chose with the SELECT button **2**. Digits increase by one each time you press the ADJUST button **3**. Holding down the button will advance digits continuously.
  3. After the data has been adjusted, press the SELECT button. The bar mark (–) appears on the LCD panel, indicating that data imprinting choices are possible.
- If you release the shutter while the blinking data is being corrected, the data cannot be imprinted.
  - \* Numerical indication  
Year = 87-19 (1987-2019)  
Month = 1-12  
Day = 1-31  
Time = 0-23  
Minute = 00-59
  - \* The blinking “:” allows precise fine-tuning of the internal clock to the beginning of a specified minute. To do so, press the SELECT button **2** to make the “:” blinking, and then press the ADJUST button **3** in sync with a time signal. After the data has been adjusted, press the SELECT button. The bar mark (–) appears on the LCD panel, indicating that data imprinting choices are possible.

### OPERATIONAL PRECAUTIONS

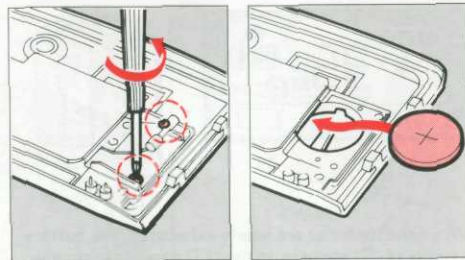
The data on the LCD panel is imprinted on each frame you expose.

- \* “Year-Month-Day” and “Day-Hour-Minute” cannot both be imprinted at the same time.
- \* As you release the shutter, the bar mark (–) on the display blinks for a few seconds, indicating the data has been imprinted.
- If there is a white or yellow object in the corner of the picture where the data is imprinted, the data may be difficult to read. When composing your photographs, try to avoid brightly-colored subjects in that corner.

### Replacing the battery for data imprinting section

The imprinting section is powered by one CR2025 3V Lithium battery. When the displays in the LCD cannot be seen clearly or when the watch function becomes unstable, replace the battery with a new one. The battery will last for about 3 years.

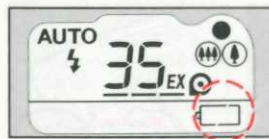
- \* Make sure that no film is loaded by checking the film information window, before opening the back cover.
1. Loosen the two battery cover fixing screws with a Phillips screwdriver, and then remove the battery chamber cover.
  2. Replace the old battery with a new battery with the + side facing up.
  3. Reinstall the battery chamber cover, and tighten the two battery cover fixing screws.



- \* When the battery is set correctly, Data will be displayed. Reset the data according to “Correcting the date and time” after replacing the battery.
- \* Keep the battery out of reach of children, infants and pets.



## BATTERY EXHAUSTION WARNING



When the batteries are nearly exhausted, the battery symbol (⚡) appears on the LCD panel to warn you. Replace the batteries as soon as possible. When (⚡) starts blinking, no operations can be performed.

### Battery life (using 24-exposure film rolls):

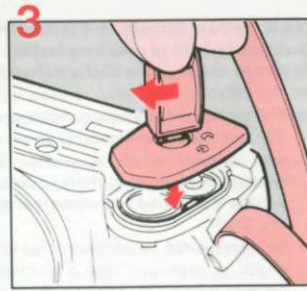
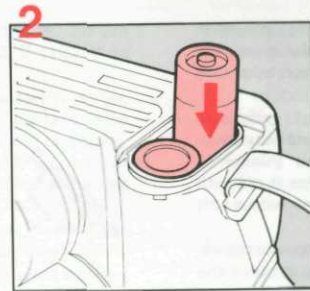
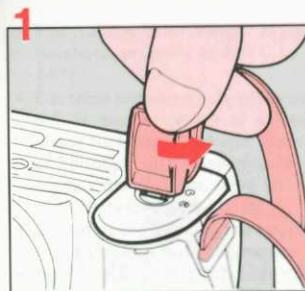
Ordinary picture taking mode, 50% of shooting employs flash	Approx. 30 rolls
--	------------------

(The CR123A batteries were used in our own testing conditions. Actual battery life/performance may vary drastically depending on either usage of Auto-Focus, Power Zoom and Flash and external conditions such as temperature and freshness.)

### Notes on replacing the batteries:

- Make sure there is no film loaded. Switch off power before replacing the battery.
- If the battery is replaced with a film already loaded, the camera enters the starting mode. It will assume the film has been just loaded and will advance several frames. The "1" will appear on the LCD panel.
- If the battery is replaced at the end of the film roll, the camera may not detect the film, and the frame counter indication may not appear on the LCD panel. Press the auxiliary rewind button to rewind the film, and remove the film.
- Battery performance may temporarily deteriorate in low temperatures, but it will recover in normal temperature.
- Keep spare batteries on hand for convenience when shooting outdoors or while traveling.
- When the camera is in a bag, make sure the main switch is off: otherwise, battery power may be wasted if the shutter release button is pushed accidentally.

## REPLACING BATTERIES Use two 3V lithium batteries (CR-123A or DL-123A)



Remove sand or water on the camera or your hands, if any, before replacing the batteries. Make sure that the power is off before replacing the batteries.

- 1 Open the battery chamber cover by rotating the cover lock in the direction of the arrow as shown.
- 2 Insert two lithium batteries, aligning the batteries with the "+" or "-" indication.
- 3 Make sure that the groove of the battery chamber lock is aligned with the (⊗) mark. Press in the cover and then rotate the cover lock clockwise to secure it in place.

If the battery is correctly loaded, the zoom lens moves slightly and the motor operates for a few seconds.

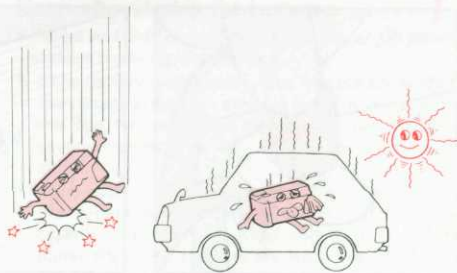
### Caution:

Replace all batteries at the same time. Do not mix battery brands, types or old batteries with new ones. Otherwise, explosion or overheating might result.

## TAKING CARE OF YOUR CAMERA

Your Pentax camera is a sophisticated, precision instrument built to give long-lasting, reliable service. It should serve you well if you handle and take care of it properly.

- The surface of the lens barrel is specially coated so the zoom lens can smoothly zoom in and out. Never use solvents such as alcohol, paint thinner or benzine to clean it. If there is dirt, wipe it off with a cloth moistened with water, and then with a soft dry cloth.
- Be careful not to subject it to strong vibrations, shock or pressure. Use a cushion to protect the camera when carrying in a motorcycle, car, boat, etc.
- Use a blower and lens brush to remove dust accumulated on the lens or viewfinder.
- Do not store the camera in a closet with mothballs or in a case where chemicals are handled. Store it in a place with good air circulation to prevent the fungus growth.
- Avoid leaving the camera for extended periods in places where temperature and humidity are high, such as in a car.



- Condensation on the interior or the exterior of the camera may be extremely harmful to the camera mechanism as it may cause rust. Furthermore, if the camera is taken from warm temperature to a subfreezing one or vice versa, the formation of icelets may cause damage. In such a case, put the camera into a case or plastic bag so that any changes in temperature will be as gradual as possible. After the temperature difference is minimized, take it out of the bag.

- The temperature range in which the camera functions properly is 50°C to -10°C (122°F to 14°F).
- Electrical problems may often be caused by water, dirt or dust at points of electrical contact. Also check for battery leakage, traces of dirt or grease, or corrosion due to salinity or gas. If you cannot correct the problem, have your camera inspected at a Pentax service center.
- Do not apply force to the zoom lens. Never place the zoom lens with the mount side facing down.
- Regular size color prints may cut off what appears on the extreme edges of the film frame. Compose your picture with a margin of safety at the edges.

- To maintain optimum performance, it is recommended that the camera be inspected every one or two years. If the camera has not been used for an extended period, or is being readied for an important photography, it is recommended that you inspect the camera or test shoot with it.
- Repairs made necessary due to usage of this product in an industrial application may not be covered under the terms of the Pentax warranty.

### Red-eye phenomenon in flash shooting

When a picture is taken using a flash, a subject's eyes may appear red in the print. This phenomenon is caused by the reflection of the electronic flash in the retina. It can be reduced when the surroundings of the subject are brightened, or shooting distance is shortened with the lens set at the wide-angle position or by employing the red-eye reduction flash feature.



## TROUBLESHOOTING

What appears troublesome may be easily remedied. Here are some problems that may occur and their remedies.

Symptoms	Causes and Remedies
1. The shutter cannot be released.	<ul style="list-style-type: none"> <li>• Is the main switch turned off? If so, turn it on. (See page 6.)</li> <li>• Are the batteries exhausted or loaded? Replace them or insert new batteries if they are exhausted. (See page 41.)</li> <li>• Is your subject out of the focusing range? Shoot in the range of 0.8 meter to infinity for ordinary photography. (See page 12.)</li> <li>• Is (U<sub>EXD</sub>) blinking on the LCD panel? If so, the film has been used up. Insert a new roll. (See page 19.)</li> </ul>
2. My printed pictures don't look very clear.	<ul style="list-style-type: none"> <li>• Did you position the autofocus frame on your subject? (See page 14.)</li> <li>• Did you obstruct the autofocus window with your fingers or hair when you pressed the shutter release button? (See page 7.)</li> <li>• Water drops or dirt on the lens protective glass, autofocus window and light sensor window will prevent you from taking good pictures. Clean them before taking pictures. (See page 15.)</li> </ul>
3. Zoom lens retracted automatically (the power is turned off automatically).	<ul style="list-style-type: none"> <li>• Did you leave the camera unused for over 3 minutes after the main switch was turned on? The power is automatically switched off if the camera is left unused for over 3 minutes. (See page 6.)</li> <li>• Was the Remote Controller removed from the camera? When the camera is left unused for more than 10 minutes with the Remote Controller removed, the camera automatically switches itself off to save battery power. Push the main switch again to turn it on. (See page 34.)</li> </ul>

Symptoms	Causes and Remedies
4. The Remote Controller does not operate.	<ul style="list-style-type: none"> <li>• The operable distance of the Remote Controller is approx. 5m from the front and approx. 0.7m from the back of the camera. (See page 35.)</li> <li>• The Remote Controller may not operate in backlit situation. (See page 35.)</li> </ul>
5. The flash discharges, though it is not dark.	<ul style="list-style-type: none"> <li>• The flash discharges automatically in backlit situations. (See page 13.)</li> </ul>
6. The [H] or [U] mark is displayed on the LCD panel.	<ul style="list-style-type: none"> <li>• If either mark disappears when the zoom button is pressed, the camera is ready for use. The camera may be defective if either mark appears often.</li> </ul>

The correct camera-to-subject distances when shooting using flash with films other than ISO 100, 200 or 400 are indicated in the table below.

Lens	ISO 25	50	1000	1600	3200
38mm (M)	0.8-2.5m	0.8-3.5m	1.5(*)-16m	2(*)-20m	3(*)-28m
90mm (D)	0.8-1.5m	0.8-2.1m	0.8-8.6m	0.8-11m	0.8(*)-15m
Macro (C)	0.5-0.8m	0.5-0.8m	—	—	—

(\*) With high speed film overexposure may occur at close range.

(-) Proper exposure cannot occur.

## SPECIFICATIONS

**Type:** 35mm fully automatic leaf-shutter camera with built-in zoom lens and auto flash, Weather-resistant with IEC 529: Second characteristic numeral 5, protected against water jets.

**Film:** Auto film speed setting with 35mm perforated DX-coded film with ISO rating from 25 to 3200 (1 EV step). Non-DX coded films are automatically set to ISO25. 24x36mm format.

**Film loading:** Auto film loading. Closing the back cover will automatically wind the film to first exposure.

**Film winding:** Auto film-winding: Two auto film-winding modes; single frame mode and consecutive mode (approx. 1.6 sec./frame).

**Film rewinding:** Auto start at the end of roll. Auto stop upon completion of rewinding. Rewinding time: approx 20 sec. with 24-exposure film. Rewinding in mid-roll provided.

**Frame number:** Automatic readout of successive frame numbers in ascending order when shooting, and descending order when rewinding.

**Lens:** Pentax power zoom 38-90mm f/3.5-7.5 8 elements in 7 groups, Angle of view: 59°-27°.

**Focusing system:** Pentax infrared active multi-beam autofocus with focus lock, Switchable to spot AF mode, Range: 0.8m (2.6ft) - infinity; 0.5m (1.6ft)-0.8m (2.6ft) in MACRO (magnification approx. 1/4.5X), Infinity-landscape mode (focus is fixed to infinity).

**Zooming:** 2-button type.

**Shutter:** Programmed AE electronic shutter with speeds approx. 1/400 sec.-1/5sec. Bulb 1/2sec.-10min.), Bulb-timer (1sec.-10 min). Electromagnetic release.

**Self-timer:** Electronic red lamp indication. Approx. 10-sec. delay with LED indication. Cancellation after activation is possible. 2 consecutive shots provided in Dual-frame self-timer mode.

**Viewfinder:** Actual image zoom viewfinder: 82% field-of-view ratio, Magnification: approx. 0.47X (38mm WIDE)-1.01X(90mm TELE), 0.96X(Macro), Diopter:fixed at -1 diopter, AF frame (Spot AF, Multi-beam AF, WIDE, TELE), Picture frame, Macro frame, Green lamp lighting: in-focus signal, Green lamp blinking: close-distance warning, Red lamp lighting: Flash-ready status, Red lamp blinking: Flash being charged.

**Exposure control:** Programmed auto-exposure control. Range: EV9-16.5 at 38mm WIDE, EV11.5-16.5 at 90mm TELE and MACRO in Auto or Daylight-Synchro mode (ISO 100), EV6-16.5 in 38mm WIDE, EV8-16.5 in 90mm TELE and MACRO mode in Slow-Shutter-Speed or Interval Shooting mode.

**Multi-exposure:** Multiple exposure function provided.

**Exposure-meter switch:** The exposure meter is turned on when the shutter release button is pressed halfway.

**Flash:** Built-in zoom flash with red-eye reduction mode, Automatic low-luminance firing in Auto mode, Flash-ON = Daylight-Synchro/Slow-Shutter-Speed Synchro (up to 1/5 sec.), Flash-OFF = Flash override, Bulb-Synchro = 1/2sec.-10min.

**Flash-effective range:** 0.8-5m (38mm WIDE), 0.8-3.0m(60mm TELE), 0.5-0.8m(MACRO) (ISO100 film used)

**Recycle time:** Approx. 3 sec. in Pentax testing conditions.

**Interval shooting:** Electronically controlled, started by pressing the shutter release button.

**Remote controller:** Infrared wireless remote controller, Step zooming at TELE, 60mm, WIDE, Effective range: 5m from the front when projected from the camera's front; 0.7m from the back when projected from the rear.

**Power source for Remote Controller:** One 3V lithium battery CR1620 (replaced by the Pentax Service facility)

**Size & weight for Remote Controller:** 26(W)x61(H)x8.8(D), 1"x2.4"x0.3" 11g (0.4 oz.)

**Power source:** Two 3V lithium batteries (CR-123A or DL-123A)

**Battery life:** Approx. 30 rolls of 24 exposure film when 50% of shooting employs flash.

**Battery exhaustion warning:** (  ) appears on the LCD panel, Shutter is locked when the (  ) is blinking.

**Data mechanism:** Crystal quartz controlled; LCD with digital clock, auto calendar.

**Imprinting mode:** "Year, Month and Day", "Day, Hour and Minute" or blank.

**Power source for data section:** Lithium battery CR2025.

**Size & weight:** 149(W)x76(H)x63.5(D)mm(5.99"x3"x2.5")  
440 grams (15.5 oz.) without battery.

**DATE model** 149(W)x76(H)x66(D)mm(5.9"x3"x2.6")  
455 grams (16 oz.) without battery.

**SPECIFICATIONS ARE SUBJECT TO CHANGE AT ANY TIME WITHOUT NOTIFICATION OR ANY OBLIGATION ON THE PART OF THE MANUFACTURER.**

## WARRANTY POLICY

All Pentax cameras purchased through authorized bona fide photographic distribution channels are guaranteed against defects of material or workmanship for a period of twelve months from date of purchase. Service will be rendered, and defective parts will be replaced without cost to you within that period, provided the equipment does not show evidence of impact, sand or liquid damage, mishandling, tampering, battery or chemical corrosion, operation contrary to operating instructions, or modification by an unauthorized repair shop. The manufacturer or its authorized representatives shall not be liable for any repair or alterations except those made with its written consent and shall not be liable for damages from delay or loss of use or from other indirect or consequential damages of any kind, whether caused by defective material or workmanship or otherwise; and it is expressly agreed that the liability of the manufacturer or its representatives under all guarantees or warranties, whether expressed or implied, is strictly limited to the replacement of parts as hereinbefore provided. No refunds will be made on repairs performed by non-authorized Pentax service facilities.

### Procedure During 12-month Warranty Period

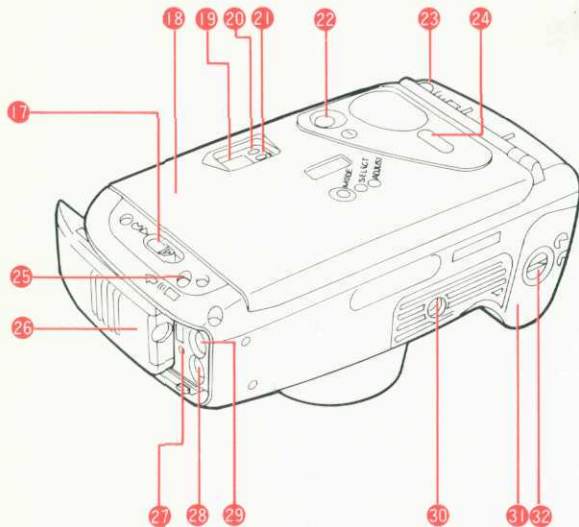
Any Pentax which proves defective during the 12-month warranty period should be returned to the dealer from whom you purchased the equipment or to the manufacturer. If there is no representative of the manufacturer in your country, send the equipment to the manufacturer, with postage prepaid. In this case, it will take a considerable length of time before the equipment can be returned to you owing to the complicated customs procedures required. If the equipment is covered by warranty, repairs will be made and parts replaced free of charge, and the equipment will be returned to you upon completion of servicing. If the equipment is not covered by warranty, regular charges of the manufacturer or of its representatives will apply. Shipping charges are to be borne by the owner. If your Pentax was purchased outside of the country where you wish to have it serviced during the warranty period, regular handling and servicing fees may be charged by the manufacturer's representatives in that country. Notwithstanding this, your Pentax returned to the manufacturer will be serviced free of charge according to this procedure and warranty policy. In any case,

however, shipping charges and customs clearance fees are to be borne by the sender. To prove the date of your purchase when required, please keep the receipts or bills covering the purchase of your equipment for at least a year. Before sending your equipment for servicing, please make sure that you are sending it to the manufacturer's authorized representatives or their approved repair shops, unless you are sending it directly to the manufacturer. Always obtain a quotation for the service charge, and only after you accept the quoted service charge, instruct the service station to proceed with the servicing.

**The warranty policy does not apply to Pentax products purchased in the U.S.A., UK, or Canada. The local warranty policies available from Pentax distributors in those countries supersede this warranty policy.**



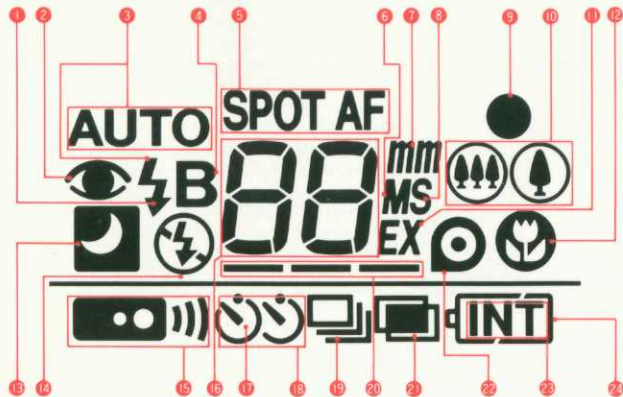
## NAMES OF WORKING PARTS (BACK)



- 17 Back cover release lever
- 18 Back cover
- 19 Viewfinder eyepiece
- 20 AF (Green) lamp
- 21 Flash (Red) lamp
- 22 Main switch
- 23 Remote control receiver (rear)
- 24 Film information window
- 25 Remote-controller-release button
- 26 Remote Controller
- 27 Auxiliary rewind button
- 28 Drive button
- 29 Red-eye reduction flash button
- 30 Tripod socket
- 31 Battery chamber cover
- 32 Battery chamber cover lock

# LCD PANEL

All indications will not actually appear simultaneously as shown.



- 1 Flash-ON mode
- 2 Red-eye Reduction Flash mode
- 3 Flash Auto mode
- 4 Bulb mode
- 5 Spot AF mode
- 6 Minute
- 7 Millimeter (focal length)
- 8 Second
- 9 Shutter release button
- 10 Zooming button
- 11 EX (film counter)
- 12 Macro mode
- 13 Slow Shutter Speed
- 14 Flash-OFF mode
- 15 Remote Controller
- 16 Exposure Counter/Focal Length Bulb-Timer/Interval-Timer
- 17 Self-Timer
- 18 Dual-Frame Self-Timer mode
- 19 Consecutive Shooting mode
- 20 Frame Advance
- 21 Multi-Exposure Shooting mode
- 22 Film Cartridge
- 23 Interval Shooting mode
- 24 Battery Exhaustion Warning

## LCD (Liquid-crystal display)

- When the LCD is exposed to a high temperature of about 60°C, it may blacken, but when the temperature falls, it will return to normal.
- The LCD may also slow down in response to lower temperatures, but this is an LCD characteristic, not a defect.



**Asahi Optical Co., Ltd.** 11-1, Nagata-cho 1-chome, Chiyoda-ku, Tokyo 100, JAPAN

**Pentax Europe n.v.** Weiveldlaan 3-5, 1930 Zaventem, BELGIUM

**Pentax Handelsgesellschaft mbH.** Julius-Vosseler-Strasse, 104, D-22527 Hamburg, GERMANY

**Pentax U.K. Limited.** Pentax House, Heron Drive, Langley, Slough SL3 8PN, U.K.

**Pentax France S.A.** Z.I. Argenteuil, 12, rue Ambroise Croizat, 95100 Argenteuil, FRANCE

**Pentax Benelux** (for Netherlands) Spinveld 25, 4815 HR Breda, NETHERLANDS

(for Belgium & Luxemburg) Weiveldlaan 3-5, 1930 Zaventem, BELGIUM

**Pentax (Schweiz) AG** Industriestrasse 2, 8305 Dietlikon, SWITZERLAND

**Pentax Scandinavia AB** Falhagsleden 57, 75127 Uppsala, SWEDEN

**Pentax Corporation** 35 Inverness Drive East, Englewood, Colorado 80112, U.S.A.

**Pentax Canada Inc.** 3131 Universal Drive, Mississauga, Ontario L4X 2E5, CANADA