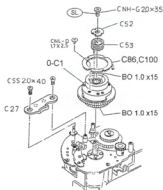


### 1.22 Main gear (assy.) (0-C1)

NB: There are 30 BO1.0 (15 each above and below) between 0-C1 and the shaft. Care should be taken not to mislay them during removal.

- 1) C86, C100, 1 screw
- 2) C27, 2 screws
- 3) C52, 1 screw (remove spring hook)
- 4) 0-C1, BO1.0 x30, remove perpendicularly.



8/70

27340

Parts No.	Description	Q	Interchangeability	NM No.	A
B38	Lock spring	1	23401-B53		3E4
B39	AM SW pin	1	23401-B62		3E4
B41	AM SW collar	1			3D4
B42	AM SW	1			3E4
B43	AM SW spring	1			3D4
B44	Black sheet	1	27020-A44		3G4
B46	Mirror sheet cushion	1			3E3
B47	Light seal curtain	1	23401-B95		4B4
B50	Light seal cushion	1			3G2
B52	Diaphragm actuator light seal A	1	23401-B100		3D2
B53	Diaphragm actuator light seal B	1	23401-B101-01		3D2
B54	Lock-pin lever covering	1			3E5
B55	Bayonet seat covering A	1			3F1
B56	Bayonet seat covering B	1			3F1
B57	Bayonet seat covering C	1			3G1
B58	Bayonet seat covering D	1			3G1
0 - C1	Shutter charge main gear assy. (C1, C22, C29, C41, C42, C69, C70, C71, C72, C93)	1			5B4
C2	Mirror charge 1st gear	1			5D3
0 - C3	Mirror coupler rod assy. (C3, C4, C12, W85 $\pm 0.2$ , BO1.0 x8, CE-3, LW13)	1			5E2
C5	Mirror charge 3rd gear	1			5F2
0 - C6	Mirror charge 4th gear assy. (C6, C12, W85 $\pm 0.2$ , BO1.0 x8, LW13)	1			5F2
0 - C7	Mirror charge 5th gear assy. (C7, C8, C12 x2, W85 $\pm 0.2$ , BO1.0 x16 LW10 x2, LW13)	1			5F4
C9	Mirror charge install plate A	1			5F3